

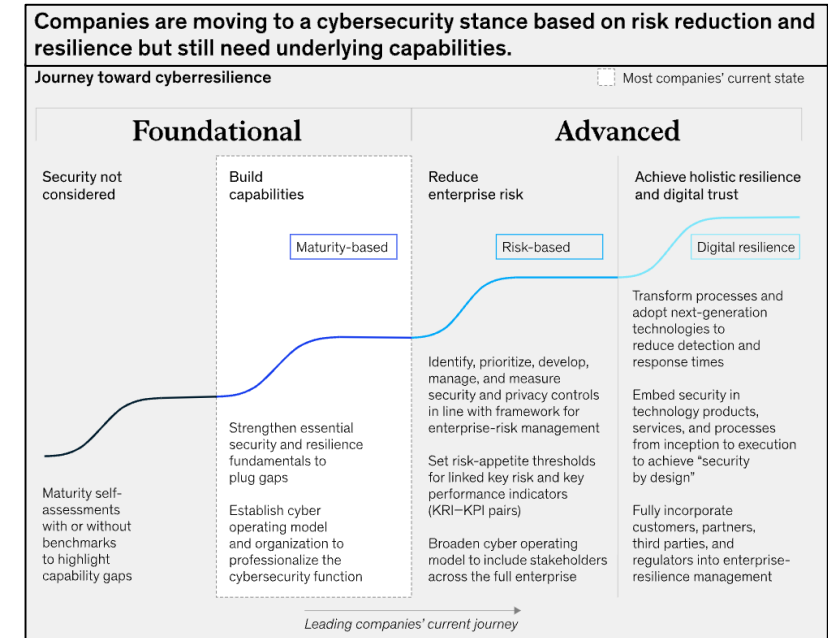


OEM: Weekly SITREP

October 05, 2021

USA & WORLD

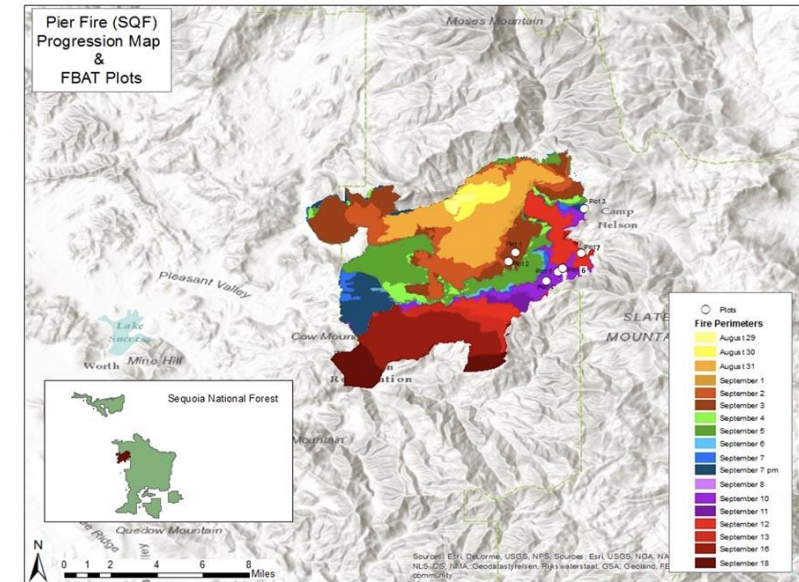
- [Molnupiravir](#) has been shown to prevent serious illness and death, although it is still in late stage clinical trials.
- Hospitals seeing [uptick](#) in patients sickened by climate-related problems, from overheating to smoke inhalation from wildfires.
- Biden administration to [crack down](#) on ransomware threat.
- It took 3 ½ months for the U.S. to go from [600,000 to 700,000 deaths](#) - toll is larger than the population of Boston.
- [Alaska](#) activates emergency health protocols.
- Data of [700 million users](#) leaked online.
- FDA remains without [permanent leadership](#) during the nation's ongoing battle against the COVID-19 pandemic.
- How worried should we be if the [debt ceiling](#) isn't lifted?
- [90%](#) of U.S. residents will have some form of immunity protection against the coronavirus by the time the Delta variant wave passes.
- [Demographics of Cybercrime Report](#): how cybercrime impacts us.
- NIH [risky experiments on hybrid coronaviruses](#) in [Wuhan](#) - new leaks [diminish the trustworthiness of research](#).
- New [research](#) probes surveillance of students' online activities - organizations [urge](#) Congress to protect student privacy.



- Did you know that [October is Cybersecurity Awareness Month](#)?
- Faced with rising cyberthreats, government and the private sector will need to [improve their digital hygiene](#) while also preparing for the next wave of cyber adversaries.
- Industry trends indicate that organizations are moving toward a [risk-based cybersecurity stance](#).
- Safeguarding such assets is the heart of an effective strategy to protect against cyberthreats.

CALIFORNIA

- California announces [COVID vaccine mandate](#) for students.
- UCSF professor awarded [Nobel Prize](#).
- California is among the [top three states](#) for school cyber-attacks.
- PG&E: [91](#) felony convictions & [31](#) criminal charges.
- San Francisco 'drowning in [fentanyl](#).' Where's it coming from?
- While [data](#) indicates COVID numbers are down from last winter's peak, Delta cases have surpassed last summer's surge.
- Why aren't California wildfires fought with the best [technologies](#)?
- Employee COVID testing & vaccination – under CA [Labor Code Section 2802](#) it is considered a reimbursable business expense.
- Legislation granting COVID [supplemental sick leave](#) set to expire.
- [CalHOPE](#) offers safe & secure emotional support for all residents who may need help relating to COVID-19.
- [Policy brief](#) assesses the degree to which crime in 2020 changed relative to 2019 - crime rates lower than historical averages.
- [In-person learning](#): some districts are reporting soaring rates of absenteeism due to stay-at-home quarantines, fear of Covid and general disengagement from school.
- UC Access Now [Demandifesto](#): disabled [UC students](#) revive activism.



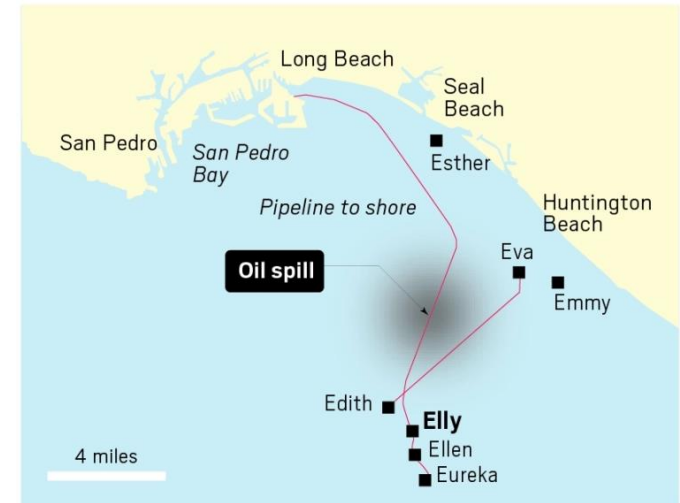
Four people were sentenced for starting the [Pier Fire](#) that burned more than 36,000 acres east of Springville, California in Giant Sequoia National Monument and Sequoia National Forest in August and September of 2017. Investigators determined that they burned a stolen vehicle, which ignited the wildfire.

REGION

- OC [oil spill](#) leaks 126,000+ gallons of crude oil - Beaches could be closed for weeks or even months.
- Wilcox would like to see student population grow to [40k](#) - the range of UCLA and UC Berkeley - but UCR is "woefully behind".
- UCR releases 2021 Annual Security & Fire Safety [Report](#).
- LAPD's \$18.5 million [plan](#) to reform itself after 2020 protest response.
- SoCal's commuter rail system pilots [ShakeAlert technology](#) to reduce train speed in advance of earthquake shaking.
- UCR has received a [\\$900,000 CARES Act](#) Recovery Assistance grant to bolster the region's ability to withstand future economic disruptions.
- Riverside to conduct homelessness and Public Safety [workshop](#).
- To connect more farmers with buyers, UC publishes [community](#) food guides - maps the community food systems in [Los Angeles County](#).
- FBI Los Angeles Field Office kicks off [ad campaign](#) to spread awareness about Hate Crimes & encourage the public to report.
- Satellite [launch](#) from Vandenberg Space Force Base ensures continued land and coastal observations in the era of climate change.

Oil spill

Oil continues to spill from a break in the pipeline connected to Platform Elly approximately 5 miles off the coast.



This [map](#) shows the area where a 126,000-gallon oil spill from an offshore rig – the largest spill in Orange County in three decades – led to major ecological damage in Huntington Beach over the weekend.

[RivCo EOC](#) is currently activated to Level 3 (virtual) in support of the ongoing COVID-19 response.

COMMUNICATIONS

- **04 October:**
 - **Coffee Social with Staff Assembly: Tuesday, October 5 @ 9-10 AM**
- **01 October:**
 - **University Advancement Interim Announcement**
- **30 September:**
 - **UCOP COVID-19 Digest**
- **29 September:**
 - **Chancellor's Update - September 2021**
- **28 September:**
 - **Provost's Office Hours - Fall Series**
- **27 September:**
 - **UCPD Crime Alert: Sexual Assault Occurred on Campus**

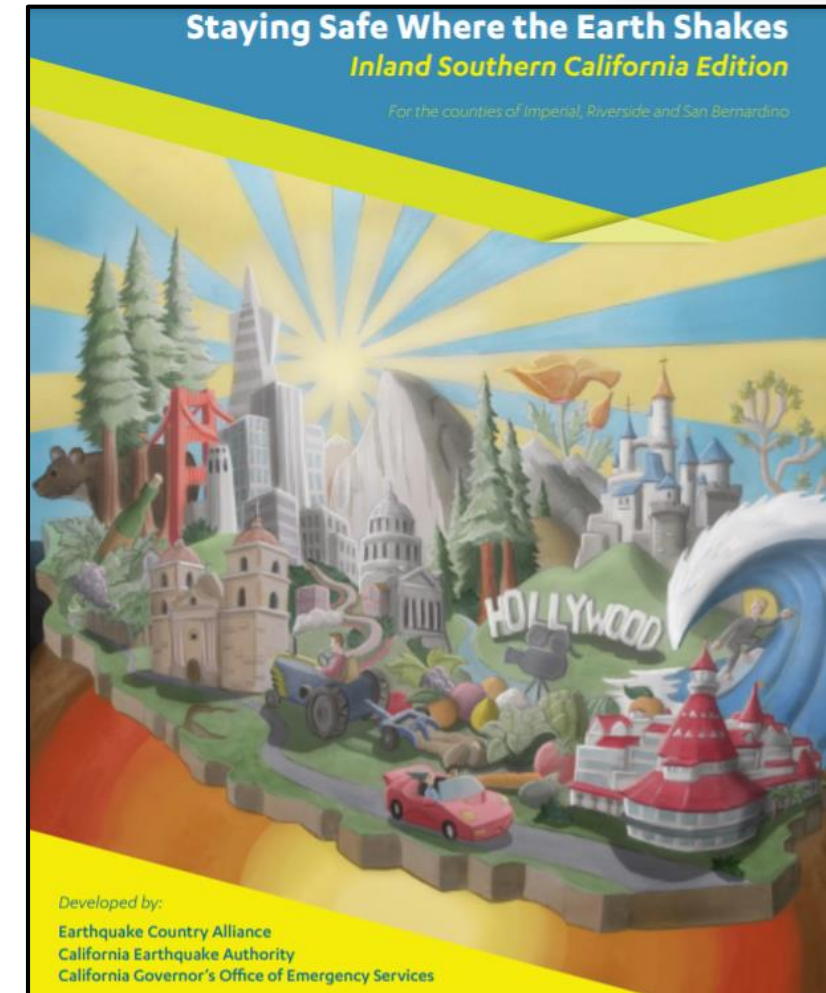
Please Reference Notes Section For More Information

NOTABLE

- [The future of the internet is known as the ‘metaverse’](#)
- [Leaked documents reveal Facebook’s negative impacts on some young users](#)
- [The Turbulent Past and Uncertain Future of Artificial Intelligence](#)
- [The clock is ticking as the state’s most vulnerable water users face a tough reckoning](#)
- [Federal data reveals the Pentagon gave \\$39 MILLION to charity that funded coronavirus research](#)
- [An outsize share of lawbreaking is perpetrated by a small group of people](#)
- [Assessing the origins of the European Plagues following the Black Death](#)
- [AI is only going to become an even more omnipresent force: We’re in a “watershed moment”](#)
- [Quadrilateral Security Dialogue \(Quad\) promotes cybersecurity best practices and shared standards](#)
- [Wildfire Smoke Is Here to Stay. Here’s How to Clean the Air Inside Your Home](#)
- [Can a gout drug be used to treat COVID-19?](#)
- [Webinar: Developing & Revising a Continuity of Operations Plan October 28, 2021](#)
- [22 Rules for New Campus Police and Security Officers](#)
- [The DEFUSE PROJECT: new leaked documents regarding the pandemic’s origins](#)
- [NIH grant documents regarding the risk of future coronavirus \(CoV\) emergence from wildlife](#)

2021 Great ShakeOut

- International ShakeOut Day is always the third Thursday of October (this year: **October 21, 2021**).
- While COVID-19 has brought many uncertainties and challenges, one thing's for sure: ShakeOut is still happening this year!
- Most people in Inland Southern California live less than 10 miles from a fault that can have a damaging earthquake and a large part of the population lives along the most potentially damaging fault of all - the infamous San Andreas.
- It slices through the region, and has the potential to produce a devastating earthquake.
- Nearby faults such as the San Jacinto fault create smaller, yet more frequent earthquakes.
- These earthquakes will disrupt services like electricity, water and sewer, and may limit access in and out of the region.
- Fire and police departments will be dealing with the most serious situations and may be unable to respond quickly to issues in your community.

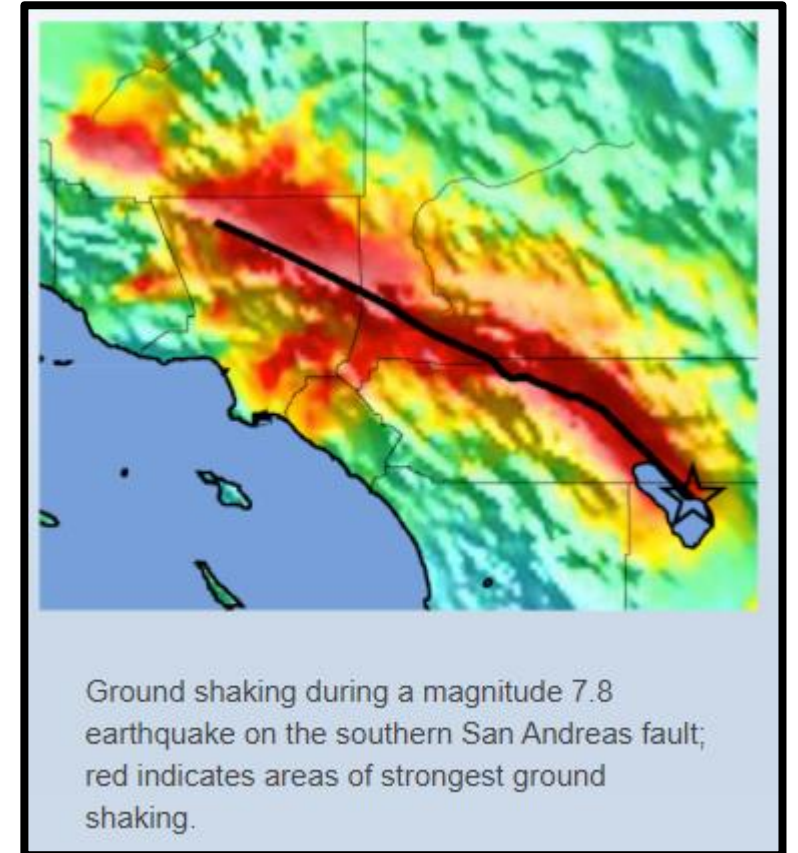


[Staying Safe Where the Earth Shakes:
Inland Southern California Edition](#) (PDF)

Preparing now will give you confidence that you and your family will stay safe where the earth shakes.

ShakeOut Scenario

- 7.8 magnitude earthquake on the southern San Andreas Fault.
- Estimated shaking will last for nearly 2 minutes.
- The strongest shaking will occur near the fault (affecting the **Coachella Valley & Inland Empire.**)
- Pockets of strong shaking will form away from the fault where sediments trap the waves (in the projected earthquake, it would occur in the San Gabriel Valley and in East Los Angeles).
- Such an earthquake will cause unprecedented damage to Southern California—greatly dwarfing the massive damage that occurred in Northridge’s 6.7-magnitude earthquake in 1994.



**It's not a matter of if an earthquake of this size will happen—but when.
And it is possible that it will happen in our lifetime.**

ShakeOut Scenario Stats

According to The ShakeOut Scenario, a 7.8 earthquake hitting along the southern San Andreas fault on a non-windy day at about 9:00 a.m. will unfold, approximately, like this:

- 1,800 people will die
- 1,600 fires will ignite and most of those will be large fires
- 750 people will be trapped inside buildings with complete collapse
- 270,000 people will be immediately displaced from their homes
- 50,000 people will need ER care
- Search and rescue efforts will last for 19 days
- \$200 billion in damage
- **The USGS has some tangible estimates on a "Strong" or "Major" event in Los Angeles in the next 30 years:**
 - There's a 60 percent chance that it'll be an earthquake measuring magnitude 6.7m.
 - There's a 46 percent chance that it'll be an earthquake measuring magnitude 7m.
 - There's a 31 percent chance that it'll be an earthquake measuring magnitude 7.5m.

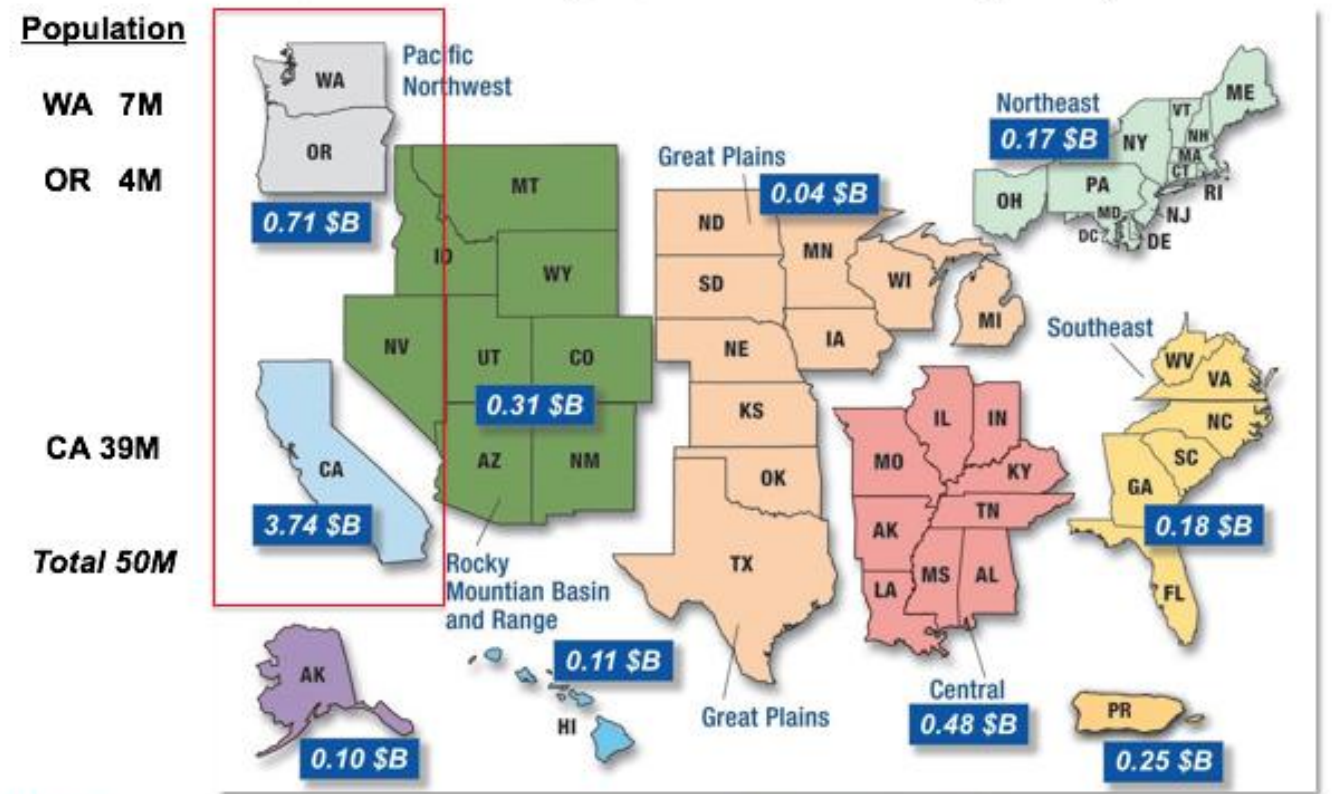


Earthquake Financial Impact

- Earthquakes pose a national challenge because more than 143 million Americans live in areas of significant seismic risk across 39 states.
- The estimated average annualized loss from earthquakes, nationwide, is \$6.1 billion, with 73% of that figure (\$4.5 billion) coming from Washington, Oregon, and California (\$3.7 billion from California alone.)
- In the next 30 years, California has a 99.7% chance of a magnitude 6.7+ earthquake.
- The Pacific Northwest has a 10% chance of a magnitude 8 to 9 megathrust earthquake.

Annualized Earthquake Losses, \$6.1B

61% in California, 73% on West Coast (\$4.5B)



Protocol For Earthquake

If in a Classroom, Auditorium, or Laboratory

In a CLASSROOM OR AUDITORIUM:

- **Drop** to the floor where you are.
- **Cover** your head and neck with one arm/hand.
- Nearby tables or desks: crawl underneath and **Hold On** to your shelter with your free hand.
- Rows of chairs: get between the rows and **Hold On** to a chair with your free hand.
- Alternative: get next to a wall with no windows and cover your head and neck with both arms/hands.

In a LABORATORY:

- Step back from the lab table.
- **Drop** to the floor on your knees next to a wall, away from glass and other hazards if possible.
- **Cover** your head and neck with your hands and arms.
- **Hold On** to something sturdy if possible.



Protocol For Earthquake



Drop where you are,
onto your hands and knees.



Cover your head and neck
with one arm and hand.

Then crawl underneath the table or desk for additional shelter.
Stay on your knees and bend forward to protect vital organs.



Hold On to your shelter with one hand
Keep covering your head/neck with your other hand.

Shake
Out™

If you are near a sturdy desk or table

Protect Yourself During Earthquakes!

IF
POSSIBLE



DROP!

COVER!

HOLD ON!

USING
CANE



DROP!

COVER!

HOLD ON!

USING
WALKER



LOCK!

COVER!

HOLD ON!

USING
WHEELCHAIR



LOCK!

COVER!

HOLD ON!

¡Protéjase durante los terremotos!

SI ES
POSIBLE



¡AGÁCHESE!

¡CÚBRASE!

¡SUJETÉSE!

SI USA
UN BASTÓN



¡AGÁCHESE!

¡CÚBRASE!

¡SUJETÉSE!

SI USA
UNA ANDADERA



¡FRENE!

¡CÚBRASE!

¡SUJETÉSE!

SI USA
UNA SILLA
DE RUEDAS



¡FRENE!

¡CÚBRASE!

¡SUJETÉSE!

Alert Thresholds

To Alert People



Wireless Emergency Alert (WEA)



General public with WEA-capable devices

5.0+

MMI IV+



Cell Phone Apps



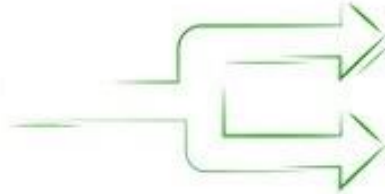
People who have downloaded a cell phone app

4.5+

**MMI III+
(user selectable)**



Android Operating System



Android cell phone users through push notifications

4.5+

**MMI III -
MMI IV**

Android cell phone users through full-screen takeover

4.5+

MMI V+



Automated Alerts through Public Address Systems, Lights, Sirens, In-House Apps, etc.



Institutions that use ShakeAlert to alert people to take a protective action

4.0+

MMI III+

To Alert Systems and Machines



Automated "Machine-to-Machine" Alerts



Institutions that use ShakeAlert to automate actions to mitigate damage to vital equipment, systems, and infrastructure

4.0+

MMI III+

Resources

- [MyHazards](#)
California Office of Emergency Services
- [California earthquake information](#)
United States Geological Survey, Northern California
- [North Coast Earthquake and Tsunami information](#)
Redwood Coast Tsunami Workgroup
- [Fault maps, historic earthquakes, how the ground is expected to shake, and much more](#)
California Geological Survey (CGS)
- [Forecast of California Earthquakes](#)
Southern California Earthquake Center, USGS, and CGS
- [Earthquake Shaking Maps and Data of California](#)
California Geological Survey (CGS)
- [Maps of recent earthquakes, ShakeMaps for larger earthquakes, email notification, and more](#)
California Integrated Seismic Network
- [Earthquake, Tsunami, and Volcano Hazards and Mitigation Information](#)
California Governor's Office of Emergency Services
- [ShakeOut Scenario](#)
2008 detailed analysis of a magnitude 7.8 earthquake along the southern San Andreas fault