



OEM: Weekly SITREP

March 15, 2022

USA & WORLD

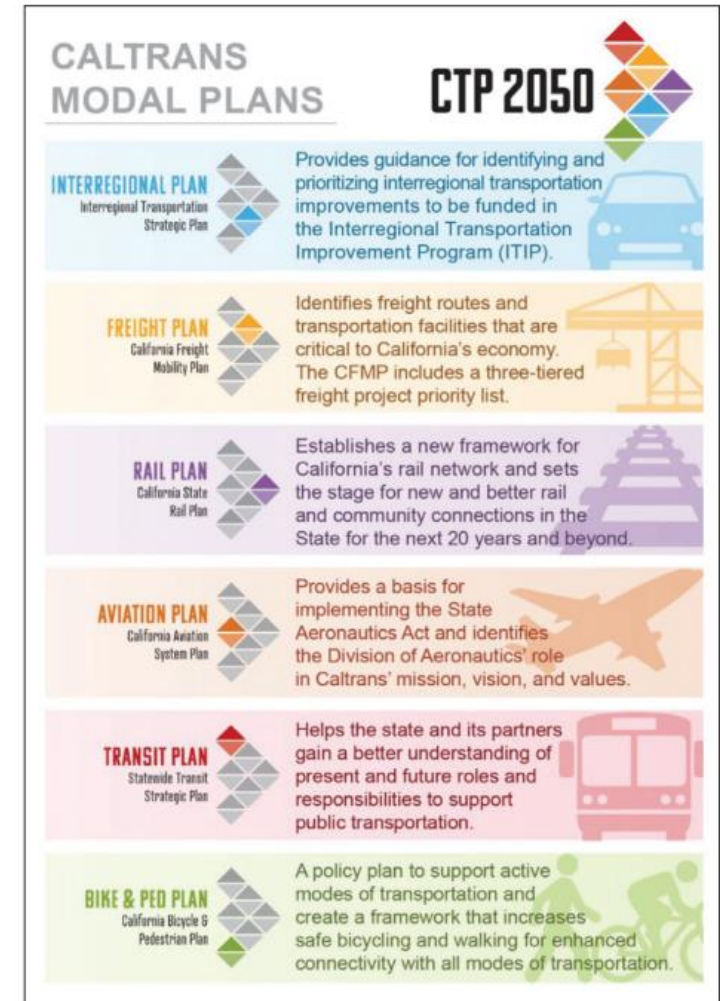
- War [censorship](#) exposes Putin's leaky internet controls.
- Global pandemic deaths: possibly [3x higher](#) than official records.
- Ten [lessons](#) from the first two years of COVID-19.
- U.S. Justice Dept. taps chief prosecutor to lead [COVID fraud](#) probes.
- [Explainer](#)-How the U.S. could tighten sanctions on Russia.
- NYC on '[ultra-high alert](#)' amid risk of Russian retaliatory cyberattack.
- What ongoing cyberattacks [suggest](#) about future cyber warfare.
- US [targeted](#) by cybersecurity attacks in run-up to Russian invasion.
- Disaster Zone [Podcast](#): Disaster Recovery for Public Agencies.
- Senate passes [bill](#) overhauling the US Postal Service.
- At least 6 US state governments [hacked](#) by China.
- The lesson of Ukraine for China: [Grabbing Taiwan would be hard](#).
- 6 arrested in [drive-by shooting](#) at Iowa high school that left 1 dead.
- Covid-19 tracker: More than [10.9 billion shots](#) given.
- [RECOVER](#): nationwide study to support research on long-COVID.
- Cyber Command has [deployed 27 times](#) to improve cybersecurity.
- DOD must make [smarter investments](#) in 2023 budget.
- What the war in Ukraine [means](#) for US Agriculture.
- '[Ticking time bomb](#)': Russian ransomware attacks are coming.
- Ukraine situation drives new cyber attack reporting [mandates](#).



- **The Office of the Director of National Intelligence (ODNI) has released the [2022 Annual Threat Assessment](#) of the U.S. Intelligence Community.**
- This report reflects the collective insights of the Intelligence Community, which is committed every day to providing the nuanced, independent, and unvarnished intelligence that policymakers, warfighters, and domestic law enforcement personnel need to protect American lives and America's interests anywhere in the world.
- The 2022 Threat Assessment provides the Intelligence Community's (IC's) baseline assessments of the most pressing threats to U.S. national interests, while emphasizing the United States' key adversaries and competitors.

CALIFORNIA

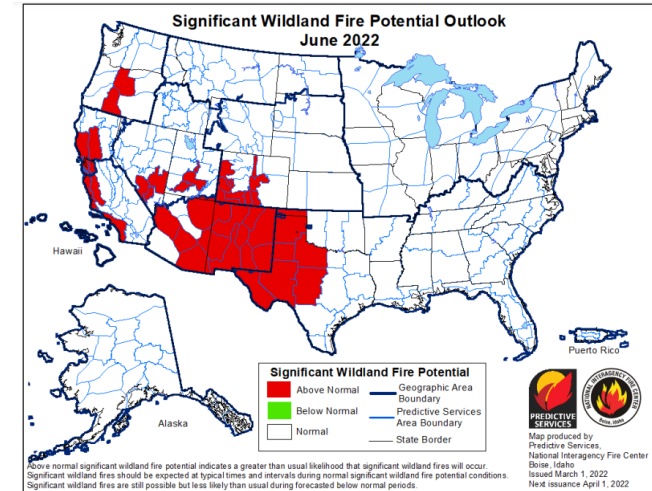
- Tensions over [2018 Camp Fire](#) flare in Paradise.
- As gas prices [spike](#), state focuses on zero-emission cars.
- Helix lab in San Mateo identifies [Deltacron](#) variant.
- California wants most students to be bilingual by 2040. [Here's why.](#)
- State sees skyrocketing number of [catalytic converter thefts](#).
- California [health](#) two years into the pandemic.
- Health officials working to address "[Long COVID](#)."
- Examining California's '[Renewable Energy Plan](#).'
- California prepares for a '[Future Without Youth Prisons](#).'
- Leaving California [groups](#) soar to 150,000+ members.
- EPA restores California [waiver](#) on vehicle greenhouse gas emissions.
- What Gov. Newsom offered in the '[State of the State](#).'
- GM [partners](#) with PG&E: EVs to power homes.
- Lawmakers aim at Russia's economy with new [bill](#).
- FBI impersonator [convicted](#) of defrauding California immigrants.
- Stretching California's [Rice Belt](#).
- Why is California [wasting](#) millions on hydrogen fuel pumps?
- State [fines](#) online university \$22M for misleading students.
- Exposure to wildfire smoke [altered DNA structure](#) in monkeys.
- '[Healthy Davis Together](#)' has [unified](#) town and gown to fight Covid.



Why does California keep building freeways in a climate crisis? Prepared by the University of California Institute of Transportation Studies (UC ITS)

REGION

- Secretary of Interior seeks to ban the term '[squaw](#)' across state.
- USC: Companies need to [comprehend the risks](#) that cyber incidents pose.
- Court [rules against](#) Big Bear development over wildfire concerns.
- Grocery workers authorize [strike vote](#) against SoCal supermarkets.
- UCR [professor](#) weighs in on the Russia-Ukraine conflict.
- Border agents thwart [endangered species](#) smuggling.
- Twin-engine plane makes [emergency landing](#) in Riverside County.
- DNA leads to [arrest](#) in 1994 killing of woman in Desert Hot Springs.
- Genetically modified mosquitoes could be [tested](#) in San Bernardino.
- Santa Barbara County [rejects](#) Exxon's plan to restart oil wells.
- Two DA's allege demotions were '[in retaliation](#)' for opposing Gascón.
- How long will high gas prices last? Experts say it could take [months](#).
- Los Angeles COVID [Vaccine Mandate](#) could be coming to an end.
- OC man pleads [guilty](#) to mortgage modification fraud.
- Alliant University/Kaiser [partner](#) for Mental Health Scholars Academy.
- Los Angeles [sues](#) 3 companies over toxic PCBs in waterways.
- [Fearless Female](#): One of SoCal's Earliest Latina Higher Ed Teachers.



Wildland Fire Potential Outlook [Southern California](#)

- Significant fire potential will be near normal across most of the geographic area March through June.
- However, the potential for significant fires will become above normal across coastal areas in June.

The County of Riverside Emergency Operations Center is currently activated to [Management Watch](#).

COMMUNICATIONS

- **14 March:**
 - **Second AVC-ES Candidate Vision Seminar – Tuesday, March 15th**
- **11 March:**
 - **Updates to COVID-19 guidelines**
 - **First AVC-ES Candidate Vision Seminar – Monday, March 14th**
- **10 March:**
 - **N/A**
- **09 March:**
 - **Search Announcement: Dean of the School of Education**
 - **Campus HR Update**
 - **Associate Vice Chancellor of Enrollment Services (AVC-ES) Finalist Visits**
- **08 March:**
 - **A message from President Drake: Celebrating the legacy of César Chávez at the University of California**

Please Reference Notes Section For More Information

NOTABLE

- [Ready.gov: Emergency Alerts](#)
- [National Weather Service Alerts](#)
- [FEMA Integrated Public Alert & Warning System](#)
- [Federal Communications Commission \(FCC\) Wireless Emergency Alerts \(WEA\)](#)
- [How To Sign Up For Alerts In Your County](#)
- [Cal-OES Emergency Alert System \(EAS\)](#)
- [California Independent System Operator \(ISO\) Alert, warning and emergency notifications](#)
- [SoCoAlert Notifications for Emergencies](#)
- [RiversideAlert & Alert RivCo](#)
- [Riverside County Office of Education \(RCOE\) Alerts / Advisories](#)
- [Riverside County Sheriff's Department Alert Center](#)
- [UCR Emergency Notification System](#)
- [Guiding Communities Through Alerts and Warnings for Emergencies](#)
- [NotifyLA: Emergency Alerts from the City of Los Angeles](#)
- [LA City Emergency Alerts on Twitter](#)
- [Mastering Mass Notification Strategies in Higher Education](#)
- [Study of Integration Strategy Considerations for Wireless Emergency Alerts](#)
- [U.S. institutions of higher education & Emergency Mass Notification Systems](#)
- [California selects emergency mass notification system](#)
- [Ventura County Wildfire Response Case Study](#)

FEMA Guide for Alerts and Warnings



If you receive an alert on your TV, phone, or radio:

Take the actions listed here.
Follow instructions from local officials.
Follow the instructions in the alert.



Advisory and Statement

Be aware! A hazard is expected to occur in your area or nearby, but its impact is not expected to be life-threatening.



Watch

Be prepared! A hazard may possibly occur in your area or nearby.



Warning

Take action! A hazard is expected to occur or is already occurring in your area or nearby, and its impact may be serious.

“THIS IS A TEST”

Officials sometimes send test or practice messages. Consider using this as a reminder to check your emergency plan and supplies. Review the 12 Ways to Prepare for more steps to take.

Some hazards may not have an advisory, watch, or warning. Use the 12 Ways to Prepare to be ready for hazards that may happen suddenly. Visit [ready.gov/be-informed](https://www.ready.gov/be-informed) to learn more about hazards not included in this guide. This is general guidance. Always defer to the alert.

12 Ways to Prepare Before a Disaster Happens:



Sign Up for Alerts and Warnings



Make a Plan



Save for a Rainy Day



Practice Emergency Drills



Test Family Communication Plan



Safeguard Documents



Plan with Neighbors



Make Your Home Safer



Know Evacuation Routes



Assemble or Update Supplies



Get Involved in Your Community



Document and Insure Property

FEMA Guide for Alerts and Warnings



Extreme Wind

Extreme wind is wind greater than 115 mph and may signal that hurricane winds may begin shortly.



Extreme Wind Warning

Take action! Dangerously strong winds are **occurring** and sustained hurricane winds **may occur**.



Extreme wind is occurring or will occur within **1 hour**.



If You Get this Alert at Home:



Follow your emergency plan.



Go to your safe shelter or small, interior, windowless room. Stay in the safe shelter and do not go into the calm of the hurricane eye.



Take cover now. Use your arms to protect your head and neck.

Extreme Wind Warning (Cont.)



Please note:

There is no Extreme Wind Watch.



If You Get this Alert in Your Car:



Slow down!



Pull aside; stay alive! Move to the road's shoulder, turn on the car's hazard lights, and stay in the car.



Be cautious if driving in or near high-profile vehicles, which may be pushed by wind.

FEMA Guide for Alerts and Warnings



Winter Storm



Winter Storm Watch

Be prepared! There is a **possibility** of a winter storm containing snow, sleet, ice, wind, or a combination of these hazards.



A winter storm may occur within **24 to 72 hours**.



If You Get this Alert at Home:



Gather supplies, food, and water, and make a plan to use these supplies for at least 3 days.



Limit your time outside and wear warm clothes.



Prepare for power outages and have a plan in case you lose heat.



If You Get this Alert in Your Car:



Put an emergency kit in your car.



Stay off the roads.

A winter storm brings snow, sleet, ice accumulation, wind, or a combination of these hazards.



Winter Storm Warning

Take action! A winter storm is **occurring** or is **about to occur**; expect snow, sleet, ice, wind, or a combination of these hazards.



A winter storm will occur within **12 to 48 hours**.



If You Get this Alert at Home:



Check supplies, food, and water, and make a plan to use these supplies for at least 3 days.



Limit your time outside and wear warm clothes.



Prepare for power outages and have a plan in case you lose heat.



If You Get this Alert in Your Car:



Put an emergency kit in your car.



Stay off the roads.

FEMA Guide for Alerts and Warnings



Flood



Flood Watch

Be prepared! There is a **possibility** of flooding.



Flooding may occur within the next **6 to 48 hours**.



If You Get this Alert at Home:



Know your risk. Move to higher ground if in a flood-prone area.



Evacuate immediately if told to do so.



Protect your property if you have time and are staying in place.



Put important documents in a waterproof container.



If You Get this Alert in Your Car:



Turn Around Don't Drown® Do not drive through flood waters.



Avoid flood waters.



Stay off bridges over fast-moving water.

Flooding is a temporary overflow of water onto land that is normally dry. Flooding may last days or weeks.



Flood Warning

Take action! Flooding is **occurring** or **about to occur**.



Flooding is **occurring** or **about to occur**.



If You Get this Alert at Home:



Know your risk. Move to higher ground if in a flood-prone area.



Evacuate immediately if told to do so.



Protect your property if you have time and are staying in place.



If You Get this Alert in Your Car:



Turn Around Don't Drown® Do not drive through flood waters.



Avoid flood waters.



Stay off bridges over fast-moving water.

FEMA Guide for Alerts and Warnings



Flash Flood



Flash Flood Watch

Be prepared! There is a **possibility** of a flash flood.



A flash flood may occur within the next **several hours or days**.



If You Get this Alert at Home:



Know your risk. Move to higher ground if in a flood-prone area.



Evacuate immediately if told to do so.



Protect your property if you have time and are staying in place.



Put important documents in a waterproof container.



If You Get this Alert in Your Car:



Turn Around Don't Drown® Do not drive through flood waters.



Avoid flood waters.



Stay off bridges over fast-moving water.

A flash flood is a damaging and life-threatening, rapid rise of water into an area that's normally dry. A flash flood may occur within minutes to hours after an event like intense rainfall or dam failure.



Flash Flood Warning

Take action! A dangerous, life-threatening flood is **occurring** or **about to occur**.



A flash flood is **occurring** or **about to occur**.



If You Get this Alert at Home:



Move to higher ground immediately if in a flood-prone area.



Evacuate immediately if told to do so.



Protect property only if it is safe to do so.



If You Get this Alert in Your Car:



Turn Around Don't Drown® Do not drive through flood waters.



Avoid flood waters.



Stay off bridges over fast-moving water.

FEMA Guide for Alerts and Warnings



Severe Thunderstorm

A severe thunderstorm is a dangerous storm that includes lightning.



Severe Thunderstorm Watch

Be prepared! There is a **possibility** of severe thunderstorms.



A severe thunderstorm watch typically lasts **4 to 8 hours**.



Severe Thunderstorm Warning

Take action! Severe weather is **happening**. There may be considerable or destructive damage.



A severe thunderstorm warning typically lasts **1 hour**.



If You Get this Alert at Home:



When thunder roars, go indoors. Find a place to shelter.



Secure outside furniture and property.



Unplug appliances.



Prepare for a power outage.



If You Get this Alert at Home:



When thunder roars, go indoors. Find a place to shelter.



Avoid using running water or landline phones.



Unplug appliances.



Avoid isolated trees, concrete, and metal that lightning could hit.



If You Get this Alert in Your Car:



Stay in your car if you cannot go indoors.



Turn Around Don't Drown® Do not drive through flood waters.



Avoid touching metal surfaces in the car.



If You Get this Alert in Your Car:



Stay in your car.



Turn Around Don't Drown® Do not drive through flood waters.



Avoid touching metal surfaces in the car.

FEMA Guide for Alerts and Warnings



Storm Surge



Storm Surge Watch

Be prepared! There is a **possibility** of life-threatening flooding.



A storm surge may occur within **48 hours**.



If You Get this Alert at Home:



Know your risk.



Follow instructions from local officials and evacuate immediately if told to do so.



If You Get this Alert in Your Car:



Turn Around Don't Drown® Do not drive through flood waters.



Do not drive around barricades.



Stay off bridges over fast-moving water.

Storm surge is a life-threatening flood that comes from rising water that moves inland.



Storm Surge Warning

Take action! There is a **danger** of life-threatening flooding.



A storm surge may occur within **36 hours**.



If You Get this Alert at Home:



Know your risk.



Follow instructions from local officials and evacuate immediately if told to do so.



If You Get this Alert in Your Car:



Turn Around Don't Drown® Do not drive through flood waters.



Do not drive around barricades.



Stay off bridges over fast-moving water.

FEMA Guide for Alerts and Warnings



Tsunami



Tsunami Watch

Be prepared! A series of dangerous and powerful waves and strong currents that may cause flooding to occur is **possible**.



A tsunami may last for **several hours or days**.



If You Get this Alert at Home:



Know your risk.



Know your evacuation route.



Be prepared to take action if necessary.



Move away from coasts to high ground.



If You Get this Alert in Your Car:



Use **evacuation routes**, which should be safe from flooding.



Turn Around Don't Drown® Do not drive through flood waters. Focus on getting to higher ground.

A tsunami is a series of enormous ocean waves caused by earthquakes, underwater landslides, volcanic eruptions, or asteroids. Scientists cannot predict when and where the next tsunami will happen.



Tsunami Warning

Take action! A series of dangerous and powerful waves and strong currents that may cause flooding is **expected** or **occurring**.



A tsunami may last for **several hours or days**.



If You Get this Alert at Home:



Follow instructions from local officials.



Evacuate immediately if told to do so or if you see natural signs of a tsunami. Do not wait!



Move away from coasts to high ground.



If You Get this Alert in Your Car:



Use **evacuation routes**, which should be safe from flooding.



Turn Around Don't Drown® Do not drive through flood waters. Focus on getting to higher ground.

FEMA Guide for Alerts and Warnings



Extreme or Excessive Heat



Excessive Heat Watch

Be prepared! Dangerous high temperatures and/or humidities are **possible**.



Extreme heat may occur within the next **24 to 72 hours**.



If You Get this Alert at Home:



Check on family members and friends to make sure they have a plan to stay cool.



Learn the signs of heat-related illness.



Prepare your home to keep heat out.



Wear light, loose clothing.



Avoid high-energy outdoor activities.



Drink fluids.



If You Get this Alert in Your Car:



Look before you lock. Do not leave people or pets in closed cars.

Extreme or excessive heat (sometimes called a “heat wave”) is a period of abnormally hot weather that lasts more than two days. Heat waves can occur with or without high humidity.



Excessive Heat Warning

Take action! Dangerous high temperatures and/or humidities are **occurring** or **about to occur**.



Extreme heat is occurring or will occur within the next **12 hours**.



If You Get this Alert at Home:



Cool down. Use air conditioning.



Find shade if outside.



Watch for signs of heat-related illness.



Wear light, loose clothing.



Avoid high-energy outdoor activities.



Drink fluids.



If You Get this Alert in Your Car:



Look before you lock. Do not leave people or pets in closed cars.